

Automation and Drives

For the Trade Press

Nuremberg, April 26, 2007

Powerful industrial PCs provide computing and visualization in harsh environments

Siemens Automation and Drives (A&D) has equipped its compact and rugged industrial PCs Simatic Box PC 627B and Simatic Panel PC 677B with powerful and energy-saving Intel Core 2 Duo processors. Demanding computing and visualization tasks can be handled simultaneously with the new PCs. They are designed for harsh industrial use at ambient temperatures of up to 55 degrees Celsius. The Box PC is a space-saving device for direct installation in the control cabinet and at the machine. The Panel PC combines the computing unit and the operating unit and is available in 12" and 15" versions with touch or key operation, and in touch versions with 17" and 19" screen diagonals.

With a 2.16-GHz Intel Core 2 Duo T7400 processor and an Intel 945GM Express chipset, the Simatic Box PC 627B and Panel PC 677B offer 75 percent more computing power than the predecessor models. The Intel GMA 950 Graphics Media Accelerator has been integrated for high-speed graphics. The specifications of both devices are scalable, with main memory expansion up to four GB, hard-disk drives up to 160 GB, and optical drives. For high system availability and data security, there is a vibration-suppressed double-hard-disk module as an optional RAID1 mirror disk system, supported by an onboard RAID controller. For low-maintenance, fault-tolerant applications and for operating without a hard disk, the Box and Panel PCs offer two drive slots for accommodating Compact Flash Cards – of which one is externally accessible. Powerful expansion cards for, say, image processing applications, can be integrated via two PCI interfaces or, optionally, one PCI and one PCI express x4 interface. Two freely programmable 7-segment displays and two LEDs are integrated

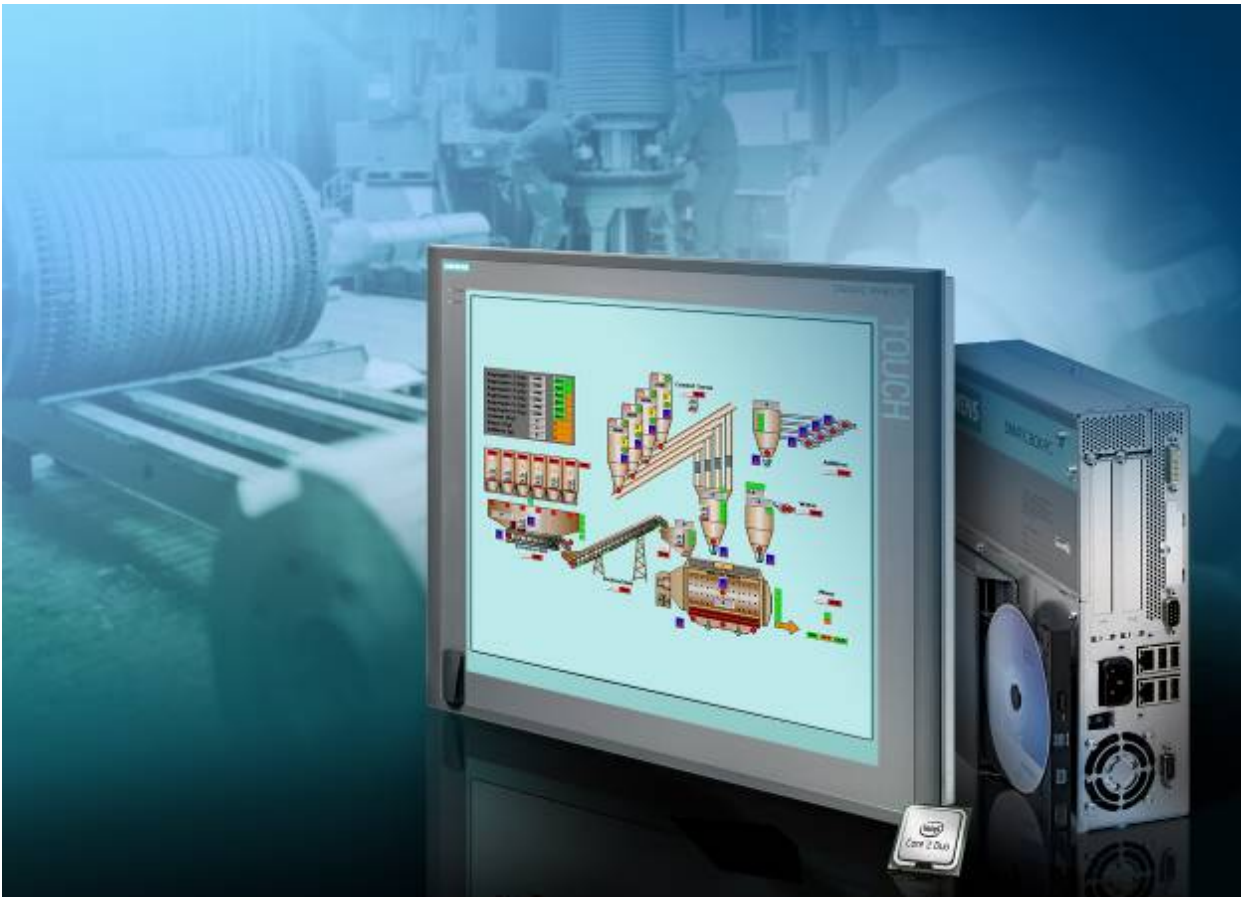
for displaying the Bios power-up and for fast diagnostics of the operating status, even within software applications.

The devices also have 10/100/1000 megabit/second Ethernet connections with teaming capability, an optional onboard Profibus interface, one DVI-I interface, four high-speed USB-2.0 ports and one 24 V DC or 120/230 V AC power supply. With an optional remote kit, the operating unit can be installed up to 30 meters away from the PC. A battery-backed 128KB SRAM secures the WinAC control data against power failure.

Windows 2000, Windows XP Professional MUI or Windows XP Embedded are available as the operating system, as well as an HMI package combining the Panel PC 677B with the Simatic WinCC or WinCC flexible HMI software.

Further information can be found on the Internet at: www.siemens.com/simatic-pc

A photo accompanies this press release. You can find this photo on the Internet at: www.siemens.com/ad-picture/1338



Siemens A&D has equipped its compact and rugged industrial PCs Simatic Box PC 627B and Simatic Panel PC 677B with powerful and energy-saving Intel Core 2 Duo processors. Demanding computing and visualization tasks can be handled simultaneously with the new PCs. They are designed for harsh industrial use at ambient temperatures of up to 55 degrees Celsius.

You will find the photo on the Internet under: <http://www.siemens.com/ad-picture/1338>

Please phone us if you require a copy of the picture. You can also receive Siemens A&D press releases electronically. Just send us an e-mail.