

SITRANS F M MAG 8000

The unique battery-operated water meter

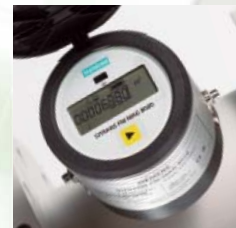


Lose less – keep more

With the brand new electronic MAG 8000 water meter Siemens once again demonstrates its innovative spirit and competitive edge. Water is a scanty and valued resource that needs to be measured and controlled efficiently. This was one of the main reasons for Siemens to develop a new water meter that offers leakage detection and ensures correct billing. Based on a well-known technology MAG 8000 saw daylight.

MAG 8000 is a battery-operated water meter with superior measurement and long lasting operation with typical 6 years' battery operation time. Developed to optimise water supply in applications like water distribution, revenue and irrigation, it is the water meter of choice for the water industry.

For more information on dedicated solutions visit www.siemens.com/MAG8000



sitrans f MAG 8000

The optimum solution to optimize water supply

In the district more and more meters are installed to reduce leakage. To visualize leakage in the distribution network, the monitoring usually takes place at night when the water consumption is low. As a bi-directional water meter that can measure flow in both directions with high accuracy, MAG 8000 is the ideal meter for leakage monitoring. And the magnificent repeatability of MAG 8000 ensures that only real flow changes over time are displayed.



SIEMENS



A guarantee for correct billing and monitoring of consumption

Due to its long lasting performance MAG 8000 is not only an ideal and reliable water meter for district network monitoring, but also for revenue metering. It features functions to visualise consumption for customer service and with its built-in data logger it can record data up to 26 months and register alarms on too low and too high consumptions to ensure optimal use of the high-priced water. MAG 8000 is designed after OIML R49 international water meter standard.

Long-term performance for optimal ownership

Also for irrigation, MAG 8000 is a perfect solution. Being an obstruction-free meter it ensures high measurement accuracy even under the harshest conditions. MAG 8000 has no moving parts that wear and tear and is resistant to solids and debris in the water. It is specially designed to comply with narrow installation conditions with minimal inlet and outlet requirements.

Easy to install - everywhere

With the bolts in place and water in the pipe, MAG 8000 will deliver superior measurement. It needs no mains power at all and its battery operation makes installation simple. A typically battery operation time of 6 years ensures low operation costs. MAG 8000's robust construction is built to resist the environment. It has a real IP68/NEMA 6P enclosure permitting placing below surface in demanding conditions of underground sumps and flooded areas. Additionally, the hidden installation prevents the meter box from being hit by vehicles and minimizes the possibility of vandalism and thefts.

Once the meter has been installed, replacements and visits to the site are reduced to a minimum.

From wired to wireless

MAG 8000 has a built-in IrDA interface and pulse output for easy data collection on site and system integration. It is equipped with an open 'add-on' communication platform for stepwise investment and is future proof for new communication standards.

From locally wired to globally 'wireless GSM-SMS communication' Siemens has the right solution for delivering the important information that reduces the demands for size and complexity of the collecting system and improves the value of information, as it is directly provided from the measuring point. MAG 8000 is designed to exceed your expectations and is backed up by Siemens international.

Product features SITRANS F M MAG 8000:

Sensor size	DN 25 - 600 / 1"-24" with DIN 1092-1, ANSI 16.5 and AS4087 flanges
Transmitter Enclosure	Integral on sensor (compact) IP 68 / NEMA 6
Display	Graphical display with touch keypad
Output	2 individual configurable outputs for pulse net flow or alarm / call up
Communication	RS 232 / 485 modules with MODBUS RTU protocol
Power supply Features	Mains power supply and internal battery back-up <ul style="list-style-type: none"> · 6 years' battery operation time (up to 10 years with external back-up battery) · 3 totalizer, including customer reset table totalizer and date of change · Data logger with consumption logging up to 26 months data and alarm on to low and to high consumption · Call up function · Tamper protection with fast indication on manipulation · Real time clock and data back up · Application identifier · Password and tamper protection with fast indication on manipulation · Diagnostic for optimal operation · Power management for optimal operation · Real time clock and date · Automated data back up
Type Approval	OIML R49
Accuracy	+/- 0,2% +2mm/s or +/-0,4% +2m/s
Configuration tool	Siemens PDM and Flow tool software

