

SIMIT SCE home

Runtime for students

The virtual SIMATIC lab for home use

SIMIT SCE is part of the innovative generation of IT solutions from Siemens that utilizes the enormous potential of modern computer simulation for automation training purposes.

In conjunction with the STEP 7 Software for students, SIMIT SCE home now provides you with the virtual SIMATIC lab for home use. The plant models created with a SIMIT SCE Trainer Package are simply exported for this purpose and then loaded onto the SIMIT SCE home version and run there. SIMIT SCE home provides the student with ready-to-use plant models that can be connected at the click of a mouse to

- The SIMATIC S7-PLCSIM simulation system

On one hand, this allows automation programs to be tested using vivid, dynamic models, and on the other hand, SIMIT SCE can be used to simulate any complex processes, or even entire plants on the PC. The ideal supplement to the actual hardware installation in the lab – the virtual SIMATIC lab on the PC for use at home.

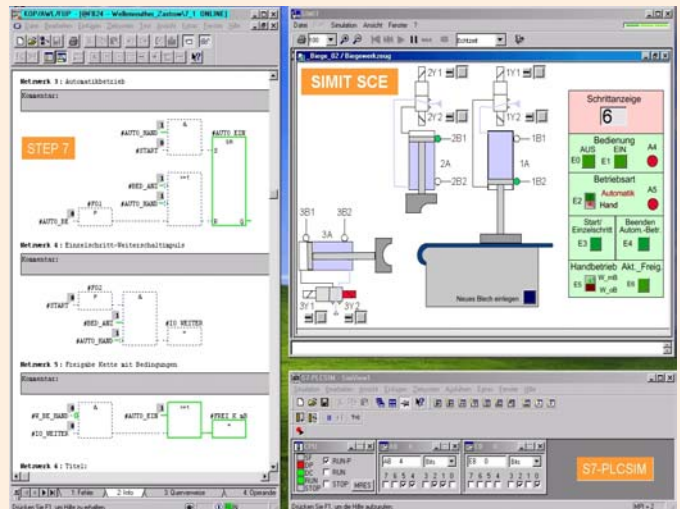
Individually paced learning

The SIMIT simulation software is the standard testing and engineering platform for SIMATIC applications in the industrial area and it is optimally coordinated with the SIMATIC Trainer Packages. The SIMIT SCE plus CPU concept has become standard modern lab equipment in schools and universities. But solutions to tasks must not remain in the realms of pure theory; they must also encompass individual programming and testing. However, this is exactly where each student has his or her own learning pace. Until now a student version of the Siemens STEP 7 program (full version including S7-PLCSIM) has been available for creating automation programs. Simulation with dynamic plant models matched to the automation tasks is easier to carry out and, above all, more vivid. It is now possible for students to use the SIMIT SCE home Runtime version in conjunction with S7-PLCSIM to run these plant models at home on a PC in coordination with the course syllabus.

Your Success is Our Goal

SIEMENS

Industrial Solutions and Services



SIMIT SCE home plus S7-PLCSIM – the PC homework workstation

Supplementary to field-proven practical lab work, pressure of time requires students to learn how to use the original industrial software components autonomously. The results can be transposed 1:1 to the actual hardware installations in the lab – an integrated engineering concept from today's professionals for tomorrow's professionals.

Licensing

SIMIT SCE home does not require a dongle, but has a limited execution time of 12 months. This period begins from the time of delivery and not from the time of installation.

SIMIT SCE is offered for schools, universities and non-commercial training centers. Purchase of SIMIT SCE home requires a SIMIT SCE 12-user classroom license (Trainer Package).

SIMIT SCE home is sold basically as a 12-user package – that is 12 runtime licenses (12 CDs).

Highlights

The SIMIT SCE home simulation package includes:

- 8 pre-installed ready-to-use sample applications coordinated with the new SIMATIC TELESTART e-education concept.
- Import of further SIMIT SCE projects created using a SIMIT SCE classroom license.
- Connection to S7-PLCSIM (from Version 5.0 with SP1 and Hotfix 2)

SIMIT SCE home has been released for the following operating systems: Microsoft Windows 2000, Windows XP professional, Windows XP home and Windows NT 4.0 (SP 5 or higher).

If you would like detailed information on SIMIT SCE or you want to speak to us personally, please don't hesitate to contact us direct.

Order numbers:

SIMIT SCE home
Twelve-month license (12 runtime licenses)
9AP1414-2AA70 €330.--*

*) Prices are in Euro ex works, excluding packaging. Prices do not include sales tax (V.A.T. – value added tax). This will be calculated separately at the appropriate rate according to the legal requirements. Publication of a new price list invalidates all previous prices. Subject to change without prior notice.

The products are to be used for training purposes only. The "General Conditions of Sale" and the "General Conditions for the Supply of Products and Services of the Electrical and Electronics Industry" apply. The "General Conditions for the Use of Software Products for SIMIT Software" apply for SIMIT software products.

In addition, the "Supplementary License Agreement for the Permission to Use SIMATIC and SIMIT Software for Research, Development and Educational Institutes" must be signed. You will receive this agreement from your SIMATIC partner following receipt of your order.

System requirements
Standard PC (e.g. Pentium III/IV or comparable),
128MB main memory, 100MB free HD memory).
Operating systems: Microsoft Windows 2000, Windows XP professional/home.

All rights reserved.

SIMIT is a registered trademark of Siemens AG. All other product and system names are (registered) trademarks of their owners in each case and must be treated as such.

Further information:

Siemens AG
Industrial Solutions and Services
Siemens Simulation Center
I&S IS E&C MES
Werner-von-Siemens Str. 60
91052 Erlangen, Germany

Contact: SIMIT Infoline
Telephone: +49 (0)9131 7-4 34 06
E-mail: simit@erl9.siemens.de
WWW: <http://www.siemens.de/simit>
<http://www.siemens.de/sce>