

PROFINET onboard ...

... for more networking options



SIMATIC PC

Answers for industry.

SIEMENS

More networking options – SIMATIC PCs with PROFINET onboard

With their onboard interface for IRT-capable PROFINET, the new SIMATIC PCs now offer even more networking options. Because PROFINET, the open and vendor-independent standard based on Industrial Ethernet, gives you direct access from the corporate management level right down to the field level.

One solution for all requirements

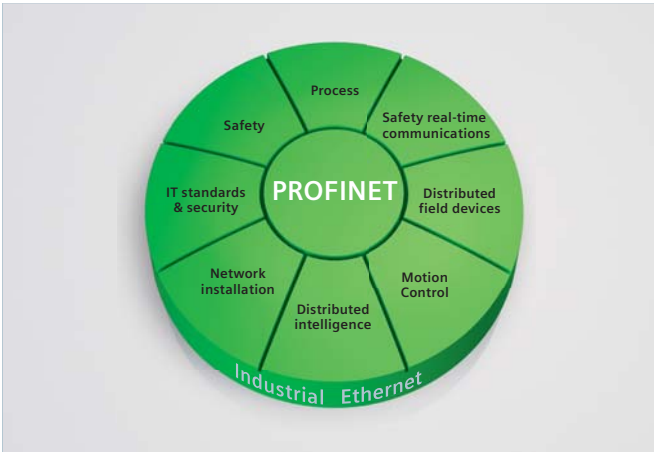
Industrial installation systems, real-time capability, integration into distributed field devices, isochronous Motion Control applications, simple network administration and diagnostics, protection against unauthorized access, efficient, cross-vendor engineering, and high machine and plant availability: PROFINET meets all these requirements.

Real-time communications:

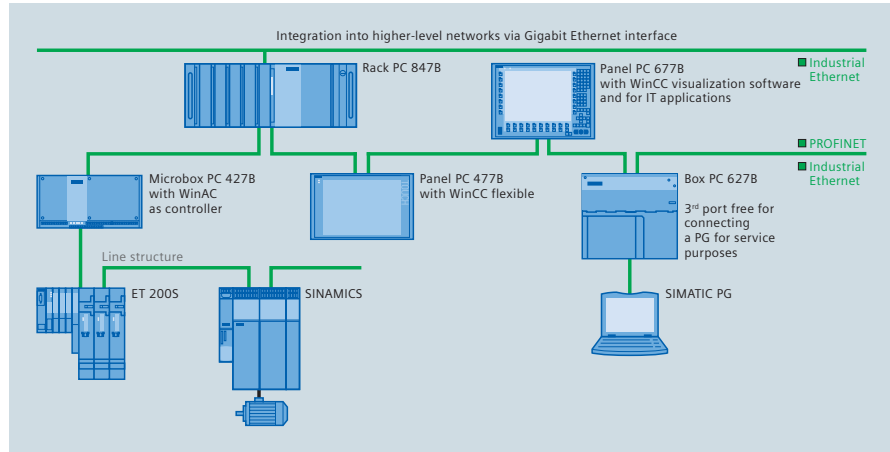
Real Time (RT) and Isochronous Real Time (IRT)

PROFINET meets all the real-time requirements of automation engineering and is used for time-critical process data – for cyclic user data or event-driven alarm incidents for example. PROFINET differentiates between Real Time (RT) and Isochronous Real Time (IRT). IRT provides hardware-supported, isochronous real-time communications on the basis of bandwidth reservation, enabling a cycle time of up to 250 μ s with a jitter of 1 μ s.





PROFINET is the solution for all requirements.



The SIMATIC PCs can easily be integrated into PROFINET networks via the PROFINET interface with integral 3-port switch

Maximum system performance

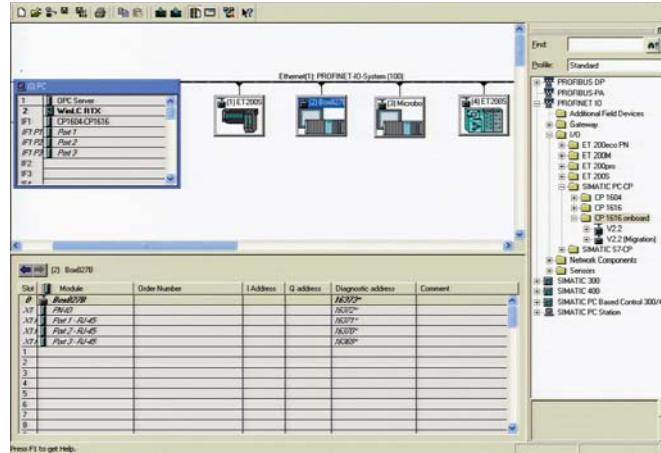
- Intelligent controller architecture (based on ERTEC 400) reduces the load on the processor and increases overall system performance
- High-speed real-time communications in automation networks
- Real time PROFINET and IT communications (e.g. TCP/IP) are possible simultaneously on one line – without impairing the real-time functionality

More flexibility and compactness

- Simple establishment of linear bus and tree topologies thanks to integral 3-port switch
- Use as additional standard Windows interface – e.g. for TCP/IP communications or visualization applications with WinCC flexible (in the case of RT operation)
- Direct connection of distributed I/O and drives – e.g. with WinAC RTX as the controller
- Additional slot available because interface integrated on mainboard
- Compactness of Microbox 427B and Panel PC 477B is retained since an expansion rack is not required
- No hardware installation required



Integral 3-port switch for flexible establishment of linear bus and tree topologies



Easy configuration of the network topology in STEP 7 or NCM-PC



Efficient self-diagnostics: SIMATIC Rack PC 847B with PROFINET LED for group faults

System-tested with SIMATIC hardware and software

- Full support in software PLC WinAC RTX 2008
- Full support in STEP 7 and NCM-PC for configuring the network topology
- Compatibility of the user software between the onboard interface and the CP 1616/CP 1604

High system availability and user friendliness

- Support for commissioning and diagnostics thanks to indication of group faults via the PROFINET LED on the front
- Enhanced ruggedness because no connector required for a PC card
- Industrial connections:
 - High level of electromagnetic compatibility
 - High level of ruggedness thanks to cable grip
 - FastConnect for simple and fast on-site preparation of the cable



SIMATIC PCs with PROFINET onboard are available in the following designs:
Box PC, Rack PC and Panel PC

SIMATIC PCs and PROFINET onboard **Your benefits at a glance:**

- More space for other PC cards thanks to integral interface
- Increased performance of the overall system thanks to intelligent controller architecture
- Shorter response times thanks to IRT-capable PROFINET with bandwidth reservation
- Real-time PROFINET and IT communications simultaneously on one line
- Simple establishment of linear bus and tree topologies thanks to integral 3-port switch
- Onboard interface can be used as additional standard Windows interface
- Full support of the software PLC WinAC RTX 2008
- Integrated into PROFINET configuration (STEP 7 and NCM-PC)

SIMATIC PCs – more industrial PCs

Find out more about SIMATIC PCs at:
www.siemens.com/simatic-pc

Find out more about PROFINET at:
www.siemens.com/profinet

The optimum configuration for your application:
www.siemens.com/ipc-konfigurator

Place orders electronically on the Internet through the A&D Mall:
www.siemens.com/automation/mall

You can find your local Siemens contact person at:
www.siemens.com/automation/partner







SIMATIC PCs with PROFINET onboard

Our SIMATIC PCs with PROFINET onboard are available in different designs and with different functionalities. These include:

- Rack PC – flexible and powerful in 19" format
- Box PC – compact and rugged for universal use
- Panel PC – rugged and powerful with high-contrast displays

SIMATIC PCs – more industrial PCs

SIMATIC PCs are reliable industrial PCs, developed and produced in-house. They offer a high degree of ruggedness and industrial suitability thanks to rugged enclosures, in-house development of mainboards, and high-quality components like industrial displays. Our aim is to provide users with products that are innovative and, at the same time, available over the long term. SIMATIC PCs offer you availability of 3 to 5 years, including at least 6 months overlap with the new generation of devices, as well as 5 years repair and spare parts service.

| | Rack PC | Box PC | Panel PC | |
|--|---|---|--|--|
| 8xx series High Industrial Maximum expandability Rugged High performance |  Rack PC 847B |  Box PC 827B | | Same mainboard basis with Intel Core 2 Duo |
| 6xx series High Industrial Compact Rugged High performance | |  Box PC 627B |  Panel PC 677B | |
| 4xx series Embedded Ultra compact Highly rugged Maintenance-free | |  Microbox PC 427B |  Panel PC 477B | Same mainboard basis with Intel Pentium M |

Siemens AG
 Industry Automation
 Industry Sector
 P.O. Box 48 48
 90327 NÜRNBERG
 GERMANY

www.siemens.com/simatic-pc

Subject to change without prior notice
 Order No.: E80001-A2470-P360-X-7600
 DISPO 06317
 21/10827 ML.015DS.52803 BL 0608X.X
 Printed in Germany
 © Siemens AG 2008

The information provided in this brochure contains merely general descriptions or characteristics of performance which in actual case of use do not always apply as described or which may change as a result of further development of the products. An obligation to provide the respective characteristics shall only exist if expressly agreed in the terms of contract.

All product designations may be trademarks or product names of Siemens AG or supplier companies whose use by third parties for their own purposes could violate the rights of the owners.